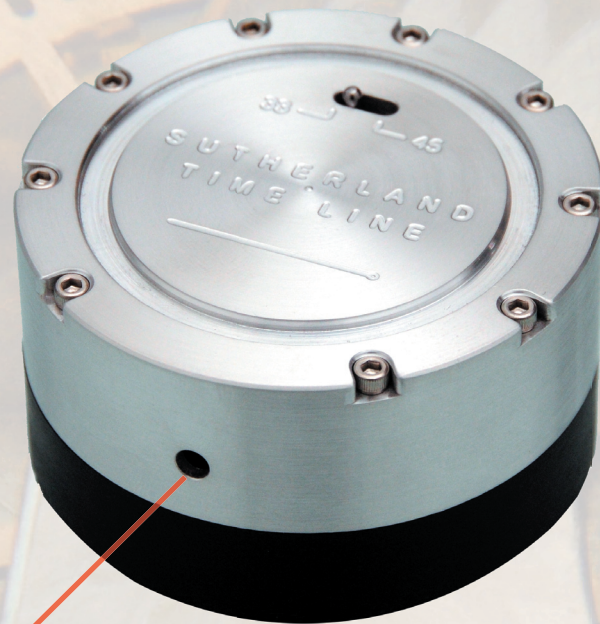


THE TIMELINE

-an instrument of ultimate precision
by Sutherland Engineering

Because timing is everything...



info@sutherlandengineering.com

Because timing is everything...

A great orchestra depends on a great conductor to keep the note of every instrument playing exactly at the right moment. The pluck of a string, or the trill of a flute just a fraction of a beat off can ruin a performance. The emotion that touches the soul of the audience depends on this precision.

It was with this precision in mind, that the Timeline was born.

As an instrument designed to keep the finest of turntables running at exactly the correct speed, there is simply no equal. With a time-base accuracy of 2 parts per million, the Timeline is the very definition of precision.

The Timeline flashes its laser at precisely $33 \frac{1}{3}$ (or 45) times per minute. If your turntable is rotating at exactly the correct speed, the dot is stretched into a line segment that is projected to the same place on every revolution. If, however, your turntable is too fast, the projected line segment will drift in a clockwise direction. If too slow, into a counter-clockwise direction. Adjust your turntable speed accordingly. The Timeline will also reveal any loading effects of stylus dragging forces.

The Timeline has also been designed to serve as an indispensable record weight that will effectively dampen the vinyl, providing quieter playback. Its machined Delrin lower section couples into the vinyl. That interface section is then tightly constrained by the rigidity of the machined aluminum upper section. Playback will be significantly improved by leaving the Timeline in place during playback.

- Batteries: 2 N size alkaline
- Battery life: greater than 800 hours
- Laser: 650 nm, less than 2.5 mw output
spot size 1/4 " at 15 feet
- Size: 3" diam, 1 3/4 " high



info@sutherlandengineering.com